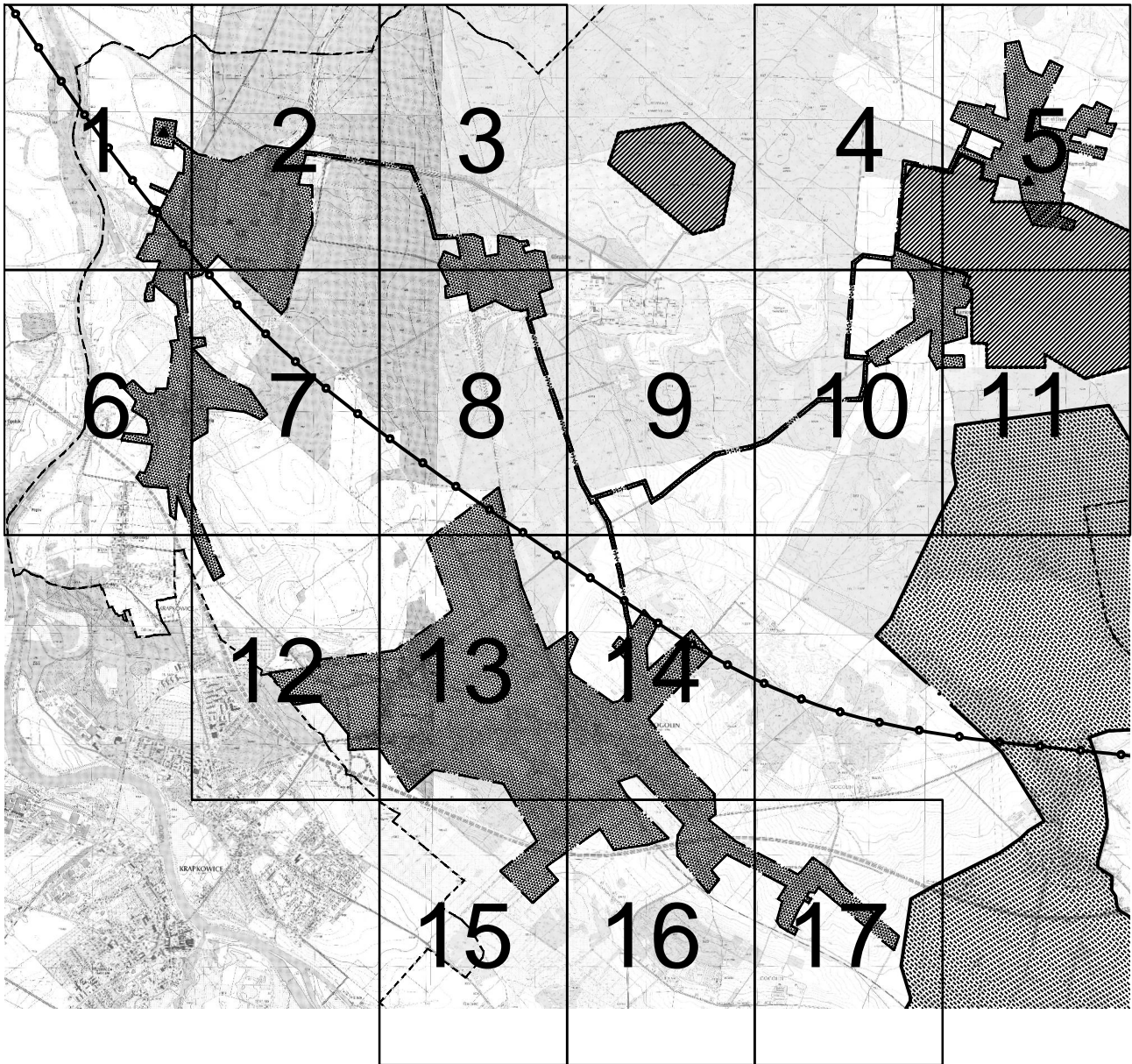


PROPOZYCJA PLANU AGLOMERACJI GOGOLIN
woj. opolskie
(podział sekcji)



Ark. 1

SKALA 1:10 000

1 cm=100 m



Legenda



- granica obszaru aglomeracji

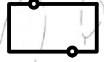
- oczyszczalnia ścieków

I. - w miejscowości Chorula;

II. w miejscowości Kamień Śląski



- granica Gminy



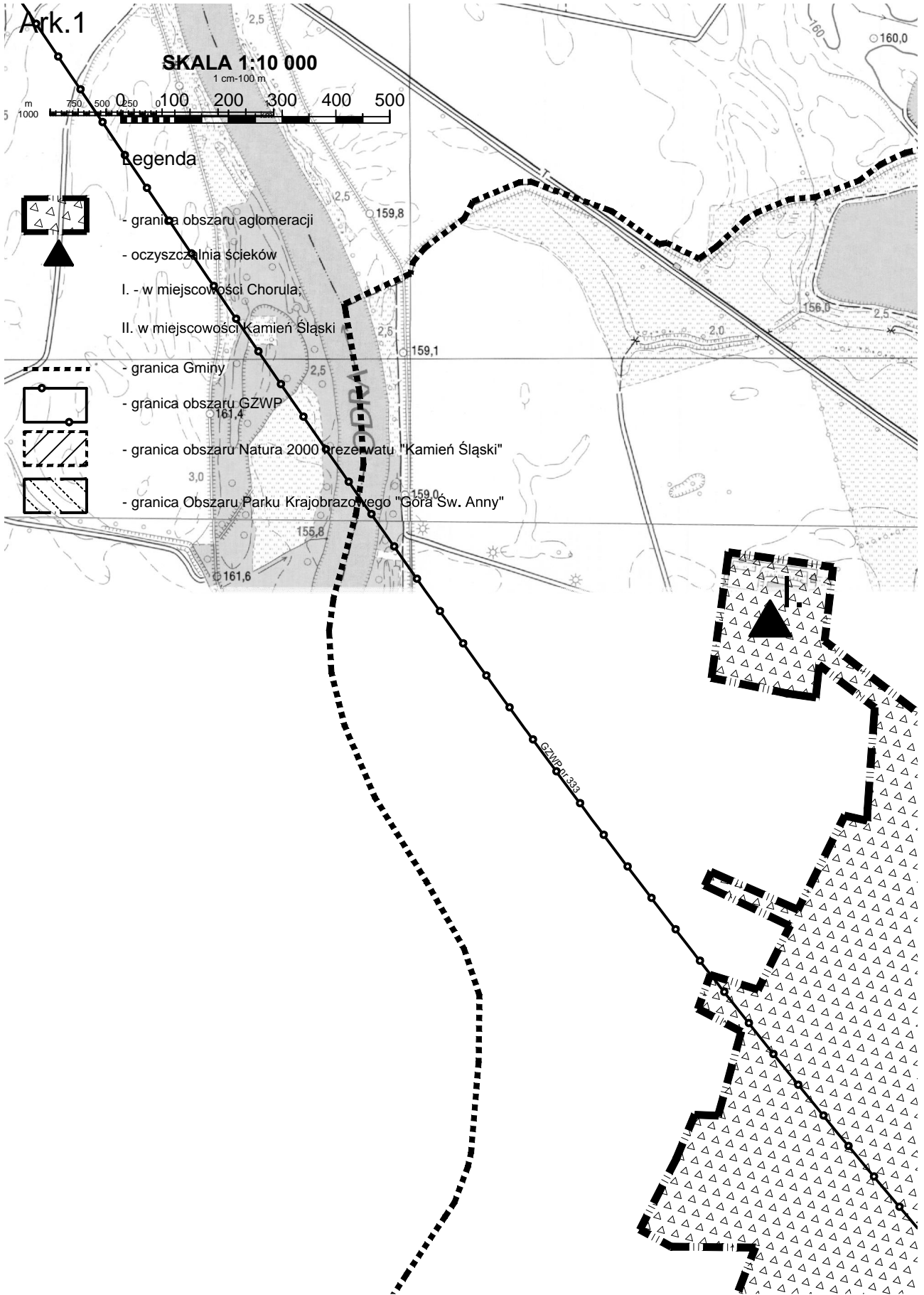
- granica obszaru GZWP



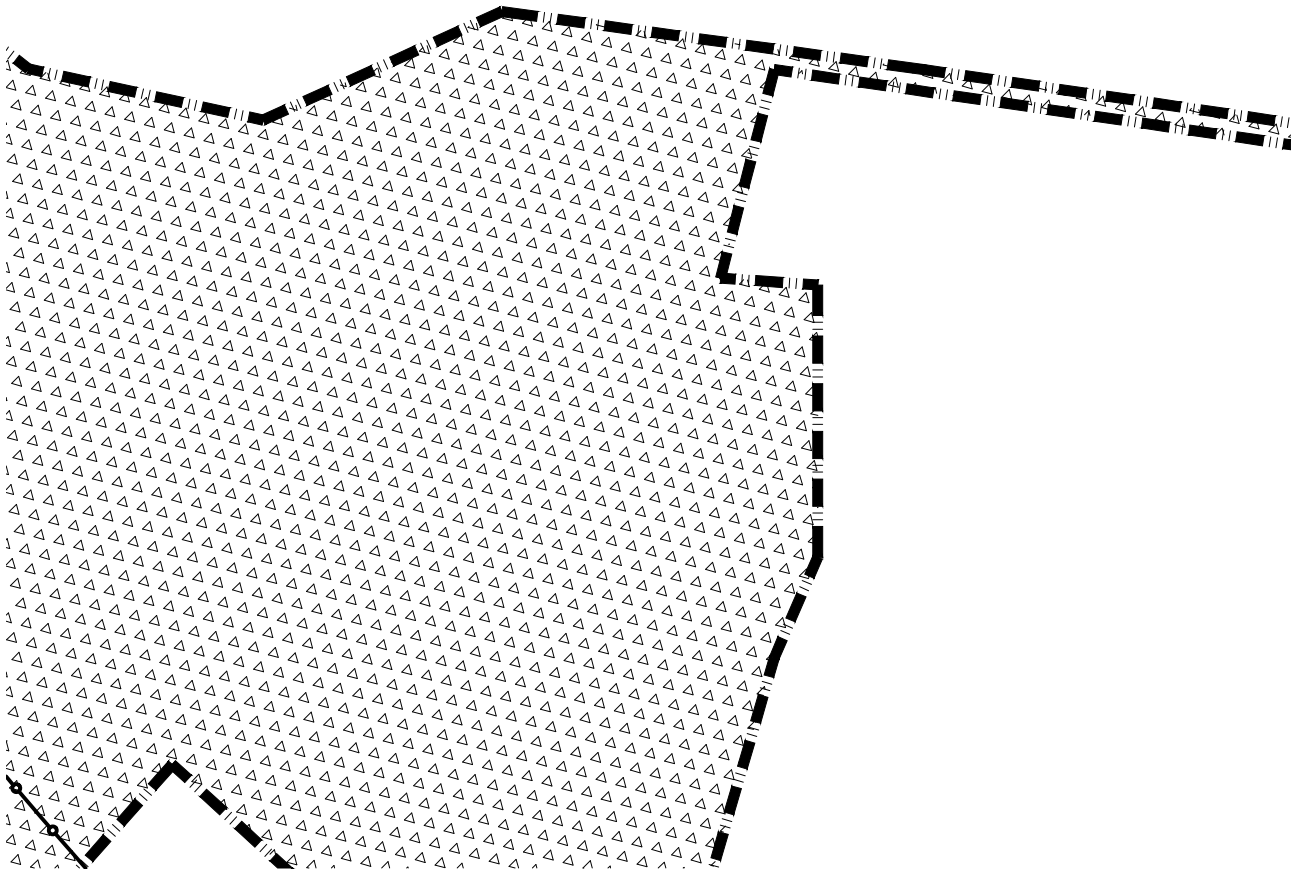
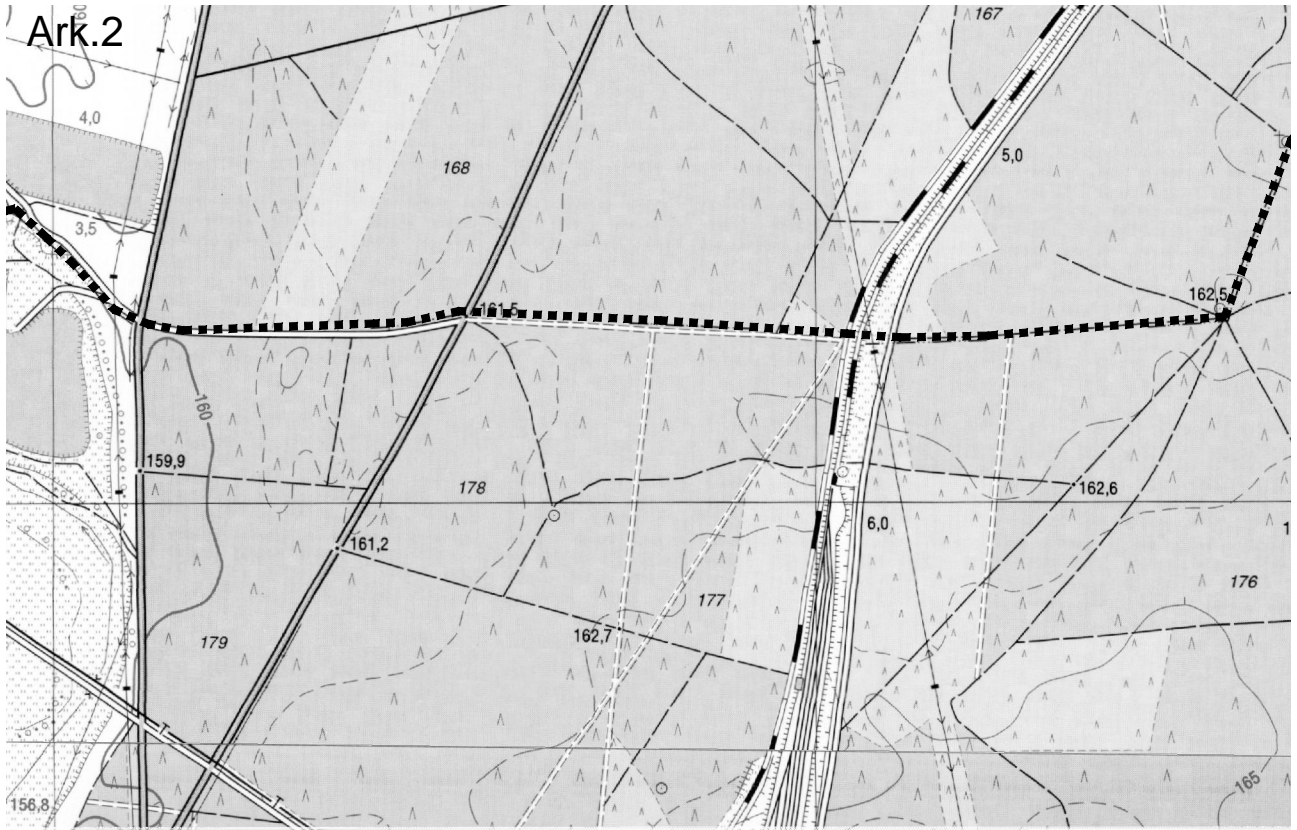
- granica obszaru Natura 2000 rezerwat "Kamień Śląski"



- granica Obszaru Parku Krajobrazowego "Góra Sw. Anny"



Ark.2

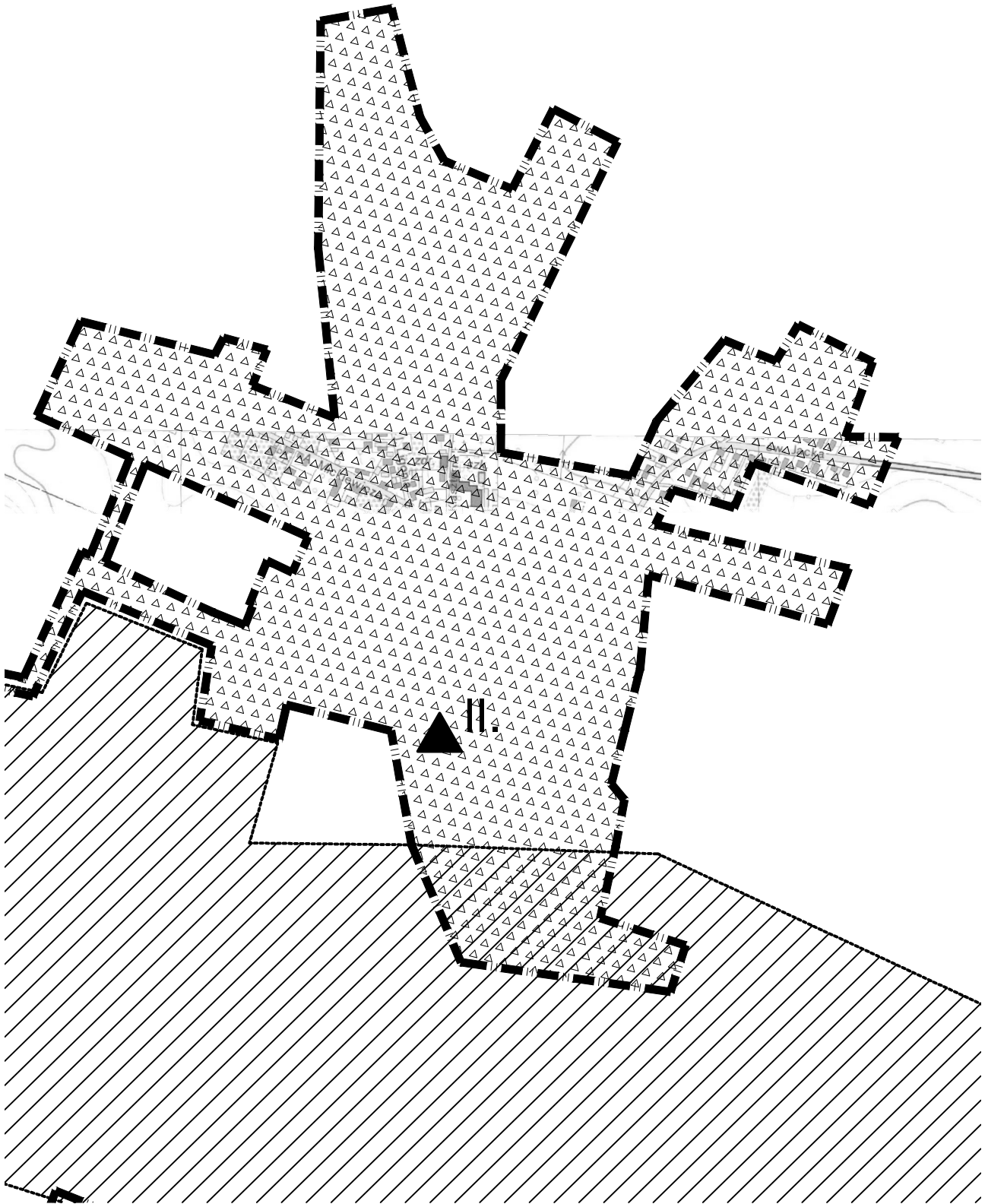


Ark.3

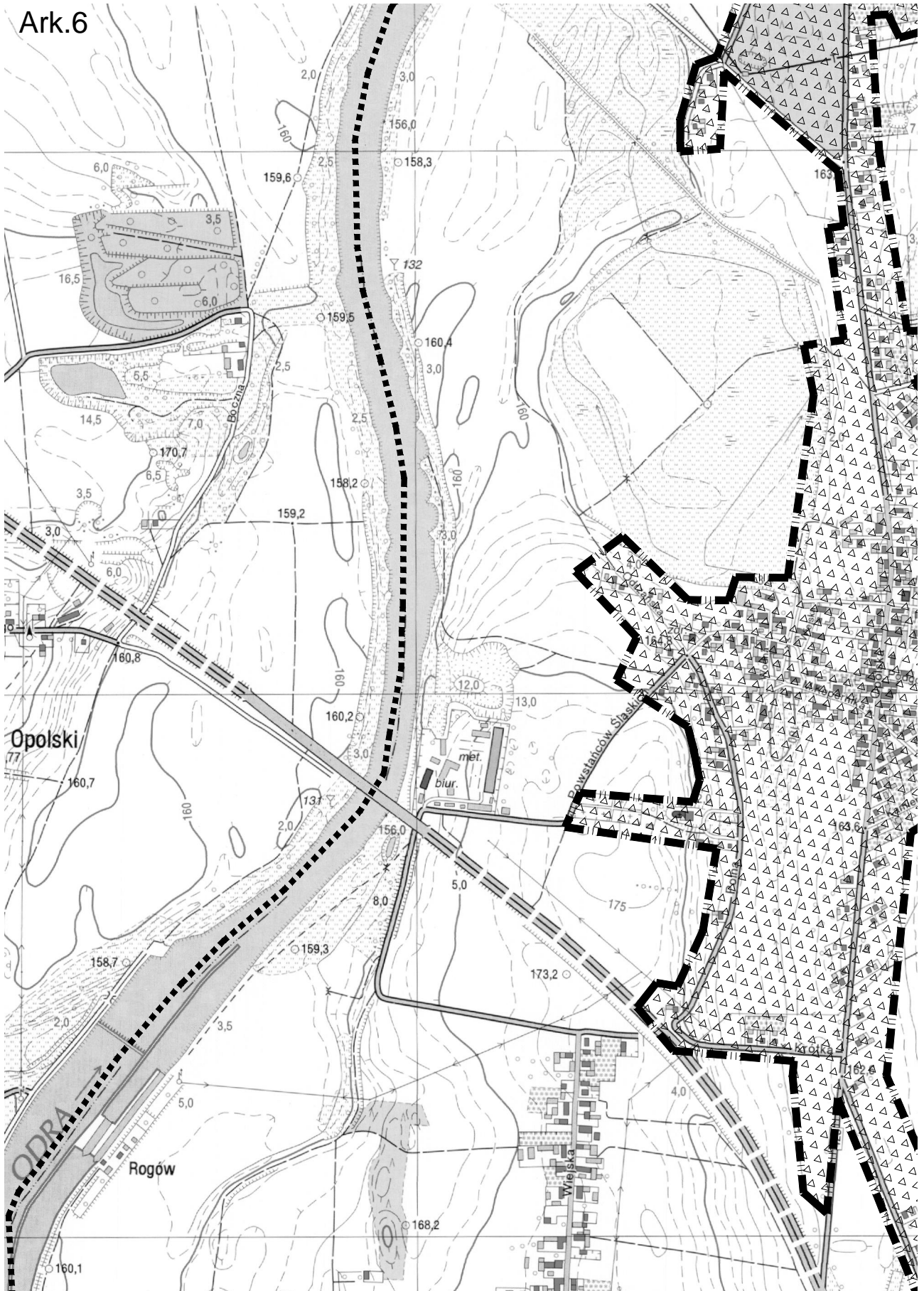


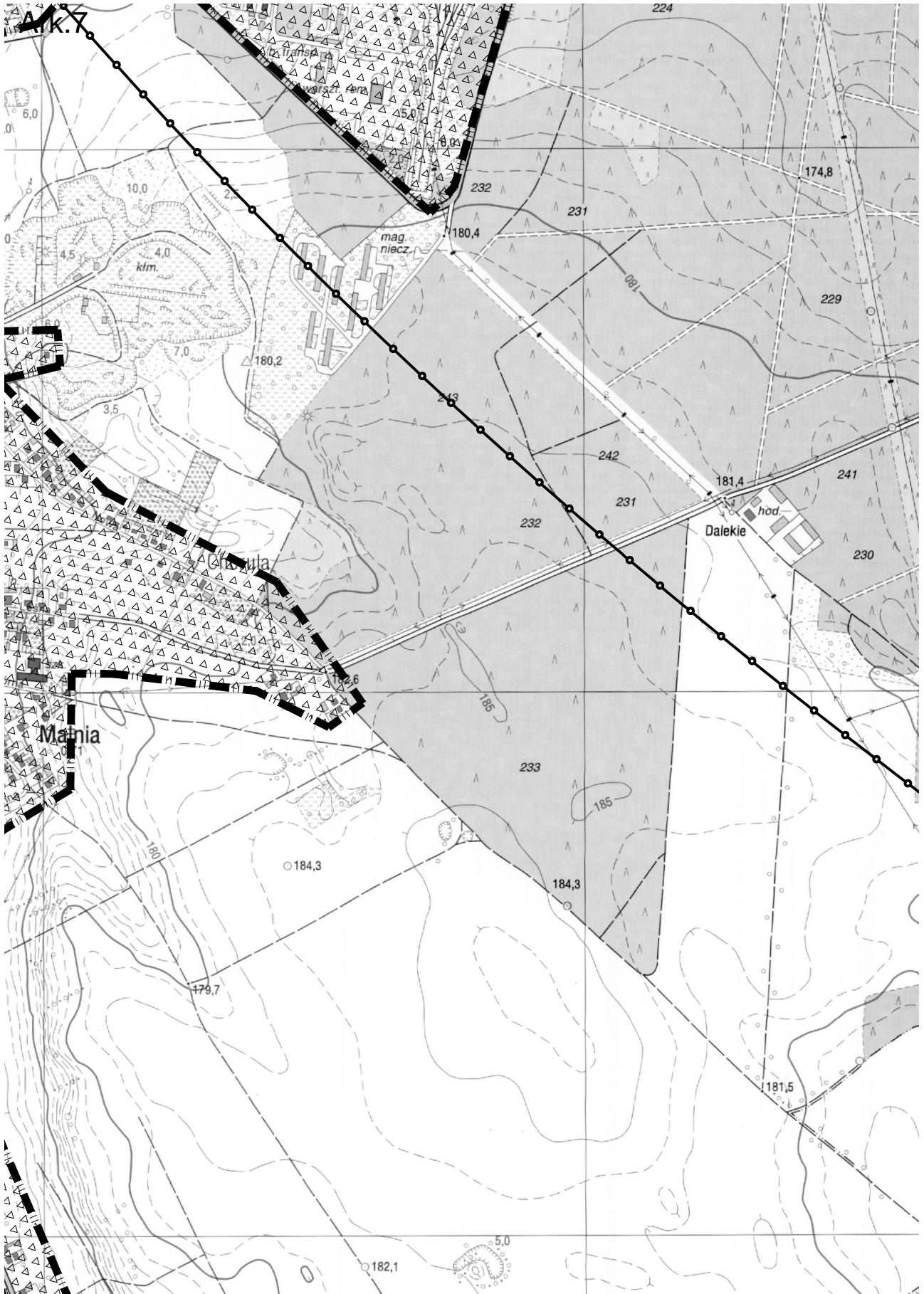
Ark.4





Ark.6





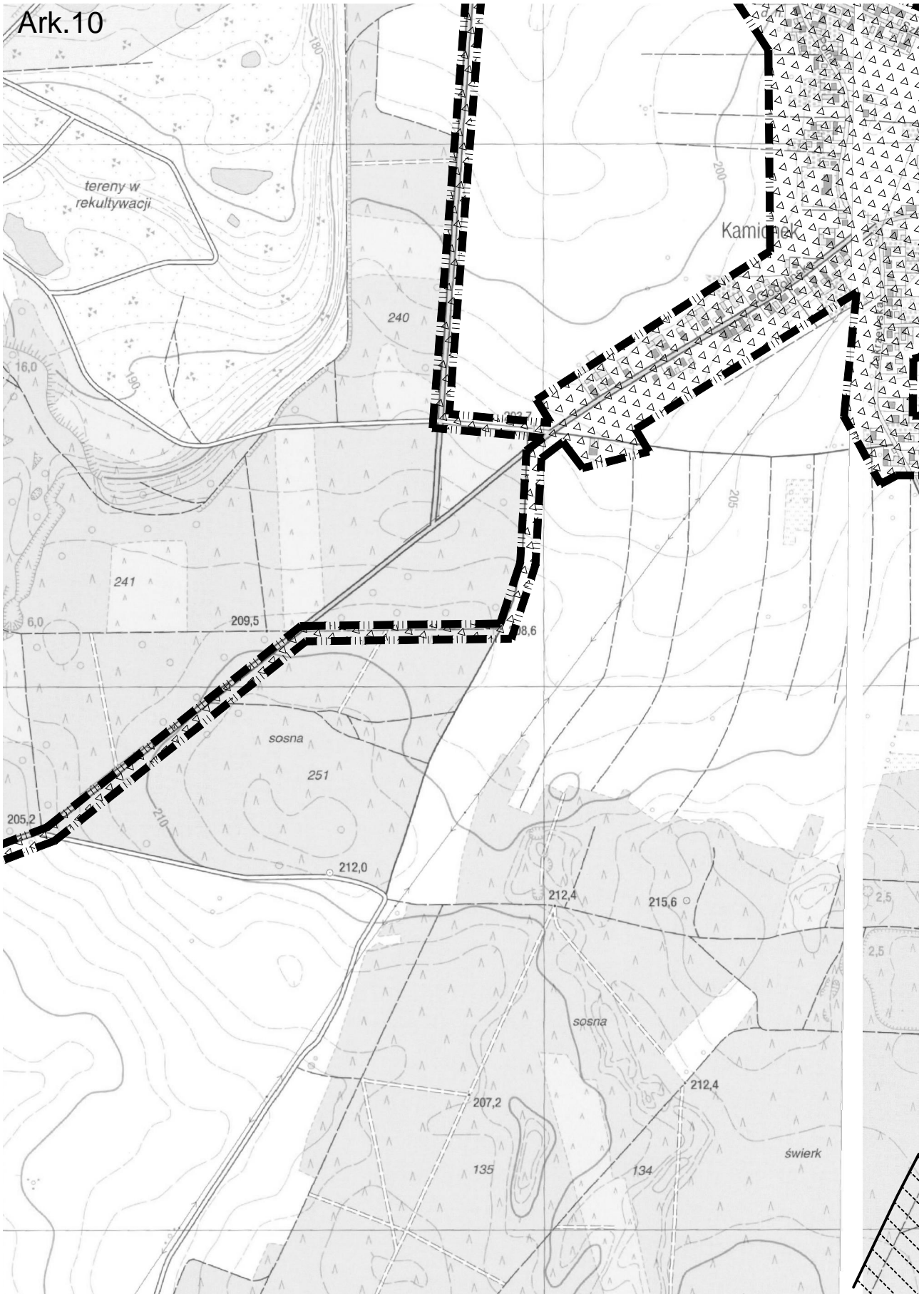
Ark. 8

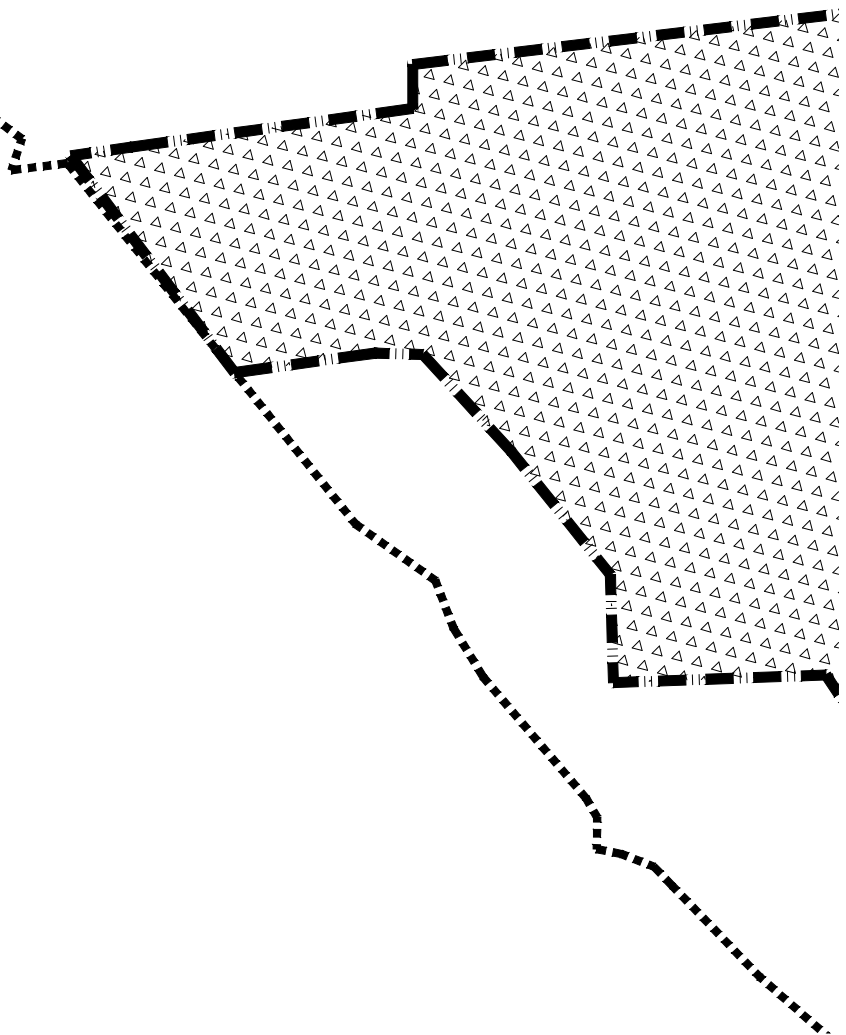
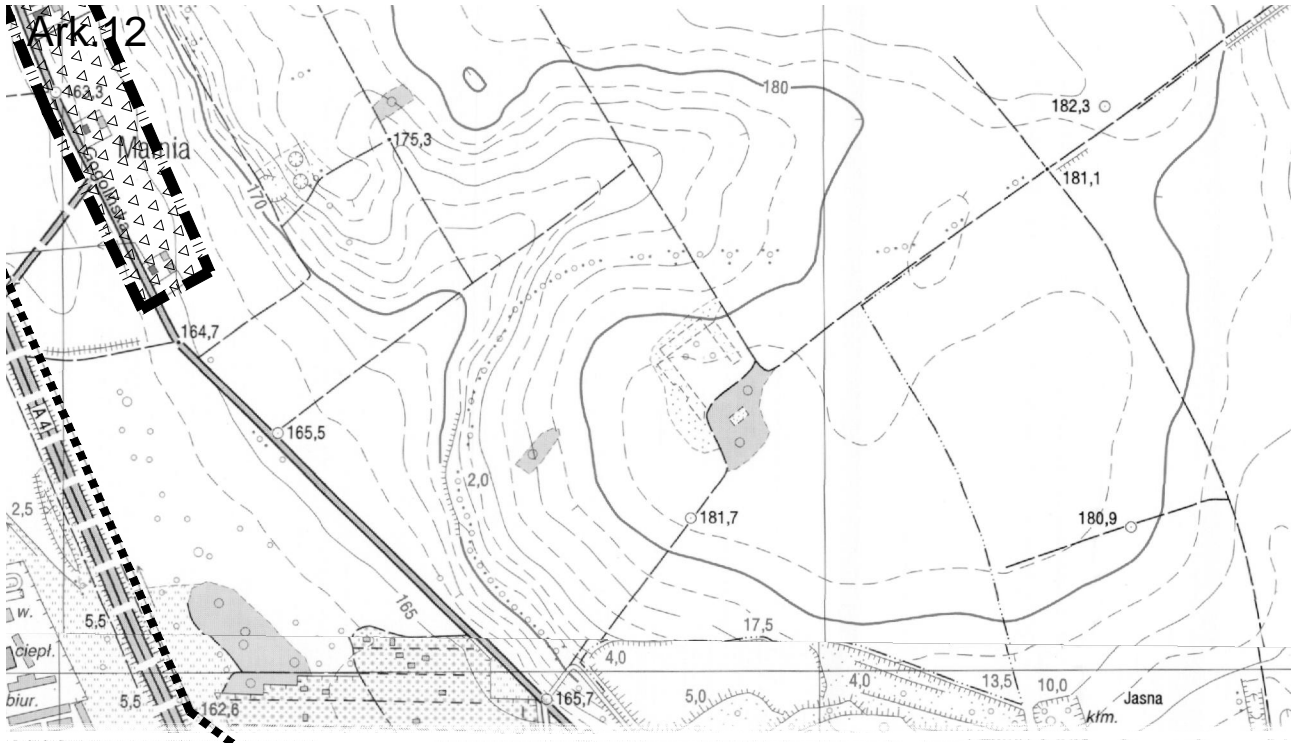


Ark. 9

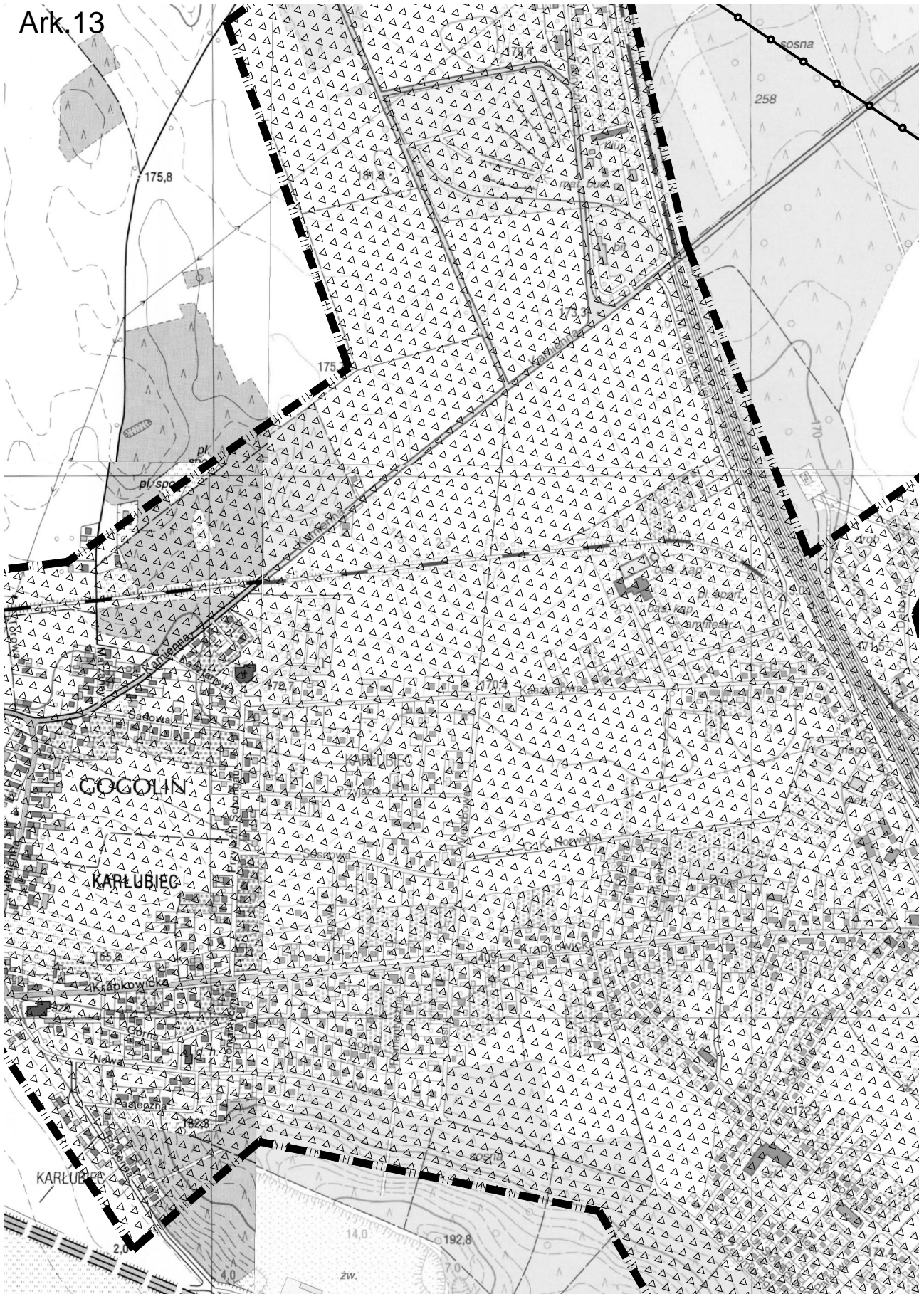


Ark.10

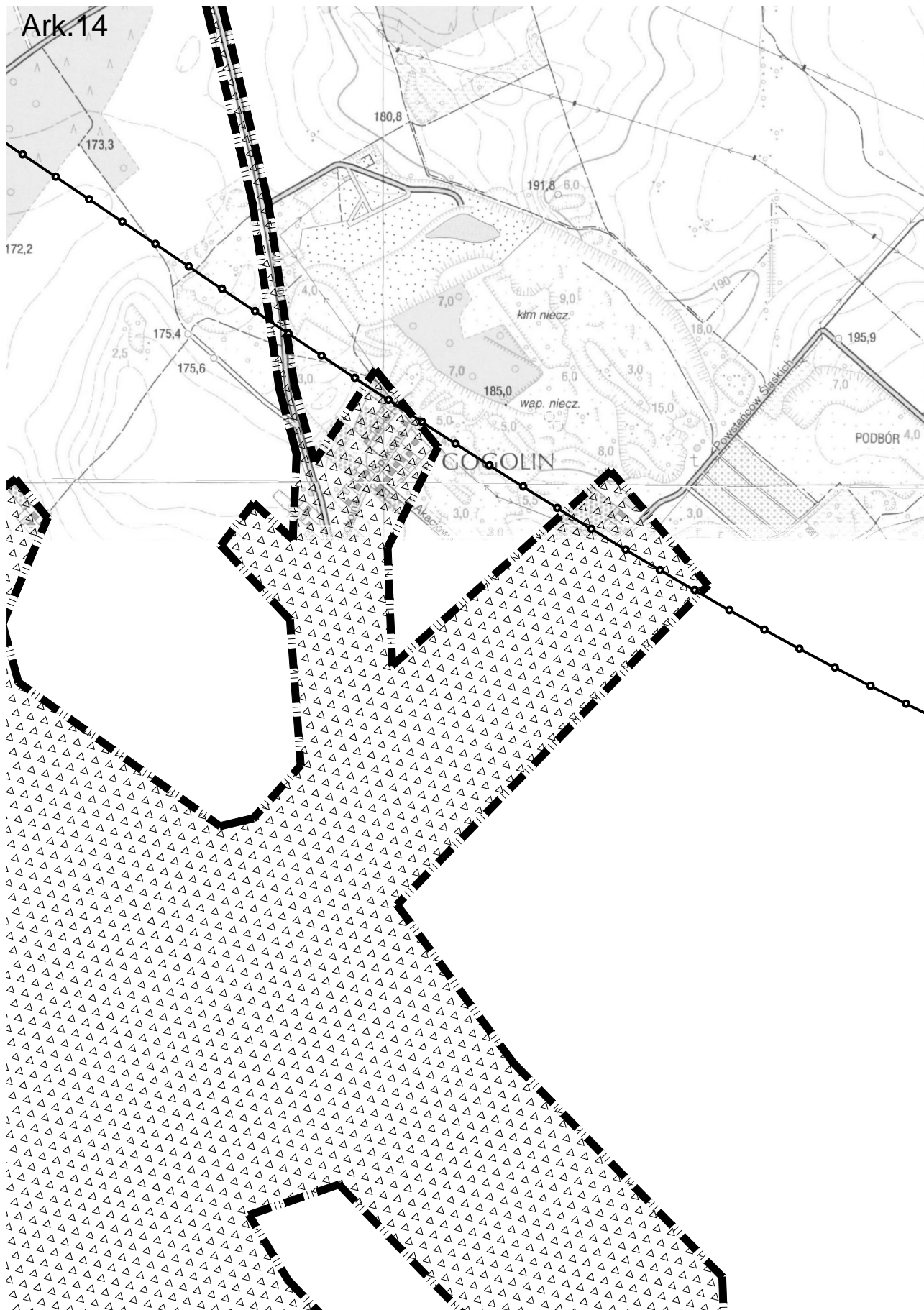


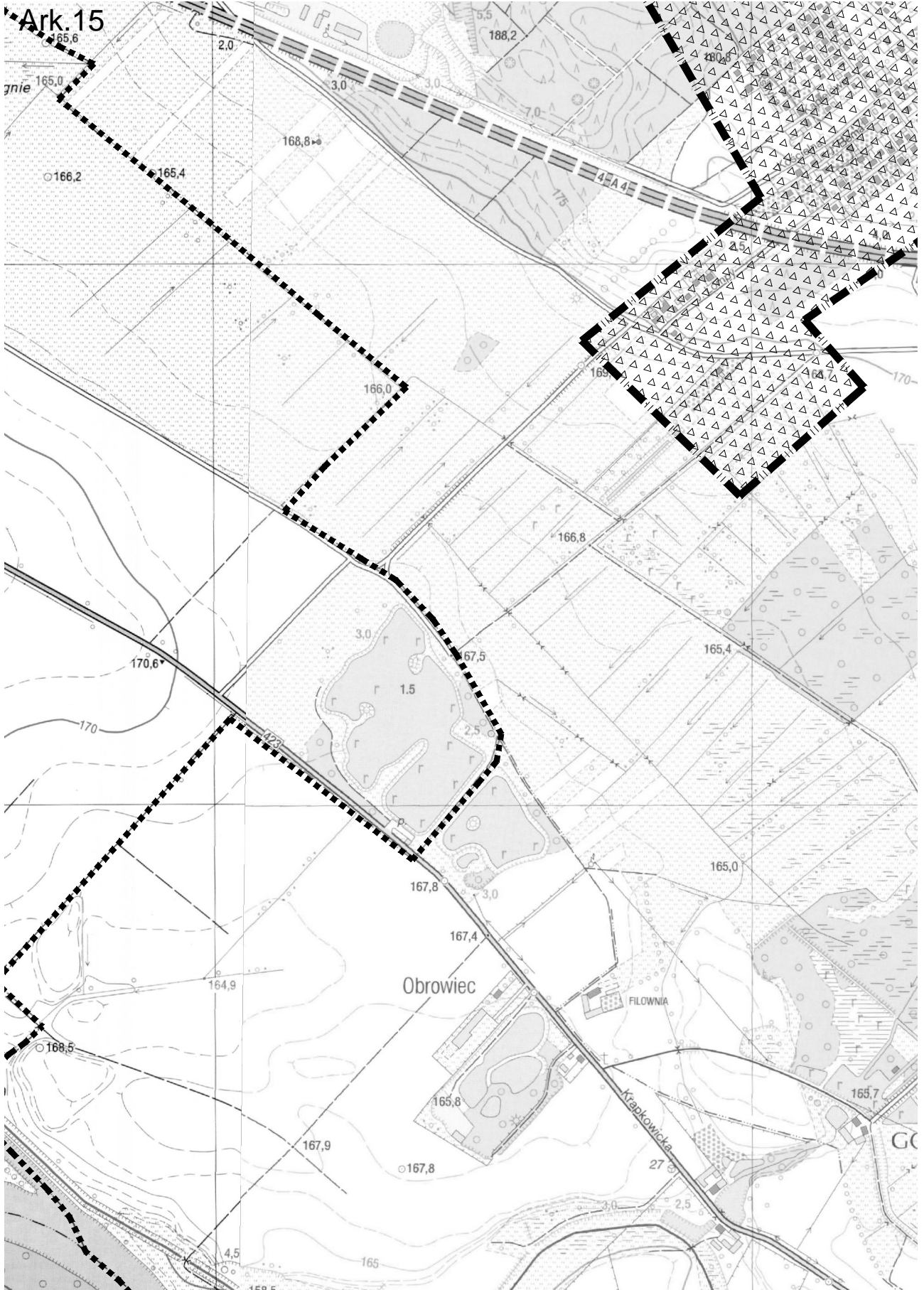


Ark. 13

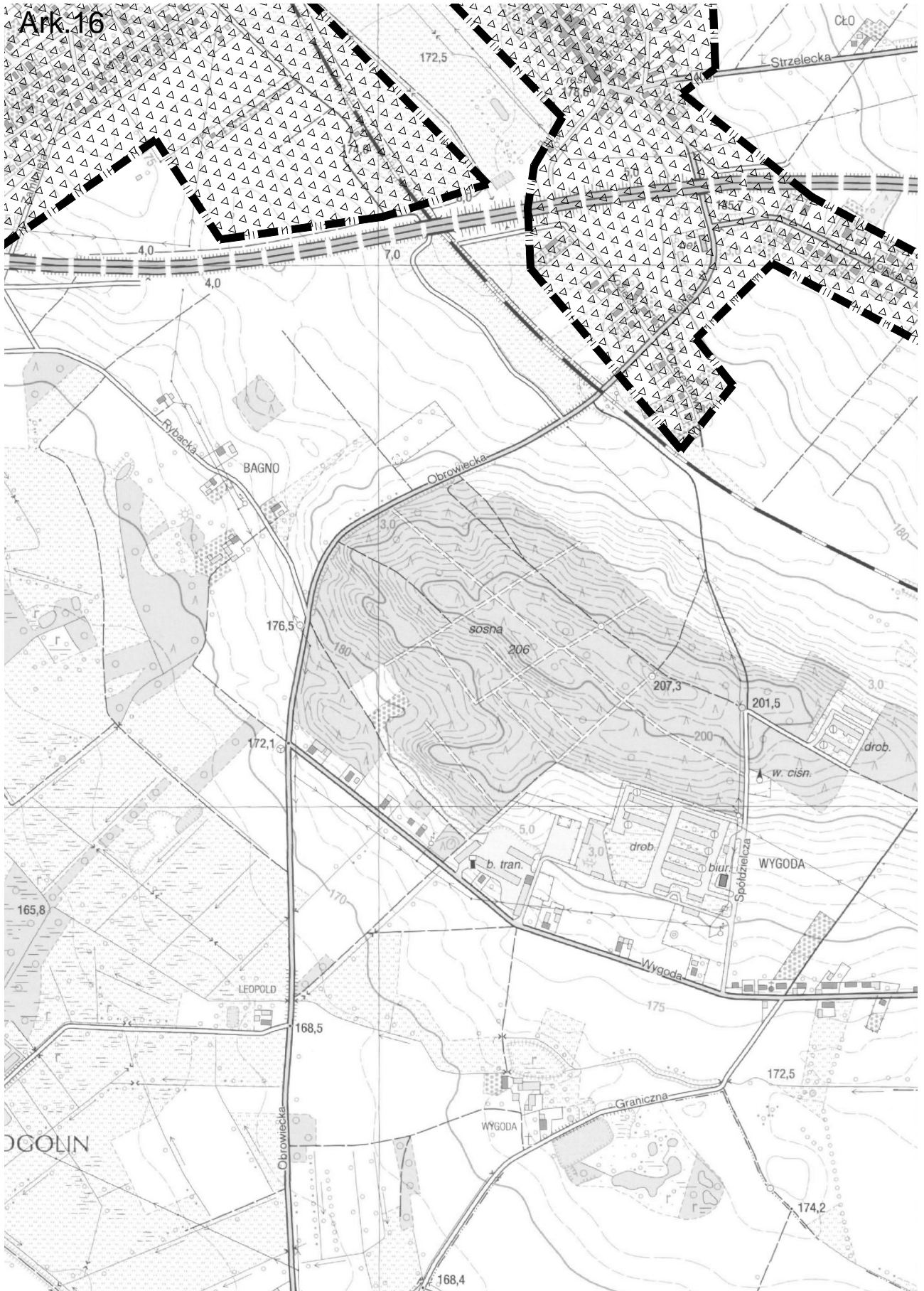


Ark.14





Ark. 16



Ark.17

